



G2e is specially designed for modern and high-traffic weighing applications in which accuracy, speed, durability, reliability and data for management must be ensured.

The backbone of **G2e** is formed by the strong load receiving structure, first class material made enclosure and high-end components from renowned manufacturers. The sophisticated firmware is the combination result of advanced mathematics, smart algorithm and innovative programming concepts.



Functions

- Static Weighing, Medium ~ Low Speed Dynamic Weighing, Piece Counting & Animal Weighing
- Add-Tare-Memory (ATM) & Remove-Tare-Memory (RTM) Function
- Support Single Range, Dual Range & Dual Interval Operation
- Near Zero Weight Value for Dynamic Weighing to avoid False Signal Output
- User Selectable Tare Operation Modes include Manual, Preset, Auto, Continuous & Single / Repetitive
- Weight & Quantity Check
- Quick Access PLUs for Weight Limits, Quantity Limits, Preset Tare Value, Customer & Product Code
- Check Result Control for Data Output & Accumulation
- Keypad Lock Function

Connectivity

- 2 x Configurable Bi-Directional Serial Comports.
- Baud Rate 1200 ~ 256000.
- Flawless connection with Barcode Scanner, Computer, Ticket / Label Printer, Remote Display, Smart Device via RS232 Cable or optional Bluetooth / WIFI / LAN Module
- Support Operator, Customer & Product Code Input via Barcode Scanner
- Support Manual Zero, Tare & Print/M+ Key Input via Barcode Scanner



Versatility, Functionality and Accuracy are always Built-in

G2e Multi-Function Weighing Scales Series

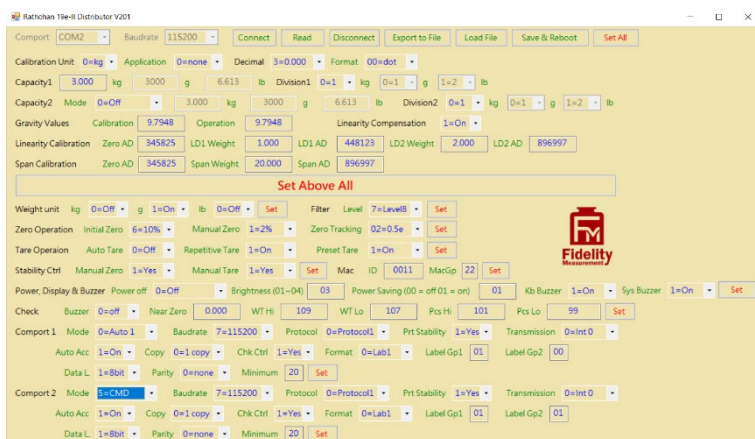
End User PC Software

- Freeware Specially Created to Support End Users
- Real Time Operation Status Monitoring
- Support Customer & Product Code, Lo & Hi limits, Preset Tare Data Entries
- Individual and Totalized Record Storage
- Transaction Database File Output



Distributor only PC Software

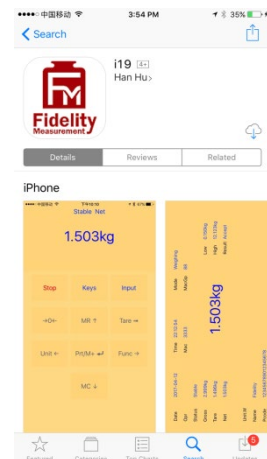
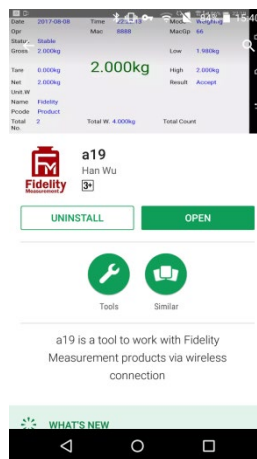
- Freeware Specially Created to Support Distributors
- Extremely Useful for Complex System Installation, Checking, Testing and Commissioning
- Real Time Important System Parameters Monitoring and Setting
- Export Current System Settings to External Backup File
- Recovery by External Backup File without Re-Calibration



Apps for Smart Phones & Devices

iOS App (i19) & Android App (a19) are available for free download at App Store and Google Play respectively. Both Apps support connection via Bluetooth and WIFI.

These Apps are so powerful that actually they turn your smart device into a handheld terminal, remote display, remote data input center and controller.



Versatility, Functionality and Accuracy are always Built-in

G2e Multi-Function Weighing Scales Series

Specifications

Model	Capacity	Readability	n_{max}
G2e-3000W	3000g	1g	3,000
G2e-30KW	30kg	10g	3,000
G2e-15KB	15kg	1g	15,000
G2e-3000L	3000g	0.1g	30,000
G2e-30KL	30kg	1g	30,000
G2e-10KH	10kg	0.1g	100,000
G2e-20KX	20kg	0.1g	200,000
Weight Units	kg / g / lb		
Display & Brightness	<ul style="list-style-type: none"> 6 x 20mm LED Numeric Digits 5 x Adjustable Brightness Level 		
A/D Converter	24 bit Low-Noise Delta to Sigma (Δ - Σ)		
Max. Tare Range	-Max or -Max ₁ (Subtractive Tare)		
Power Source	<ul style="list-style-type: none"> Built-in Rechargeable Battery = 6V, 4AH. External Power Adaptor = DC 12V, 1A 		
Platter	210 x 250mm ABS Platter with Stainless Steel Insert		
Accessories	Built-in Rechargeable Battery, Universal Power Adaptor, Dust Cover		
Packing	Individually Packed: - <ul style="list-style-type: none"> Dimensions = 32 x 30 x 18cm. Net / Gross = 3.40 / 3.90kg 4 Units in Shipping Carton: - <ul style="list-style-type: none"> Dimensions = 94 x 35 x 36cm. Net / Gross = 13.60/ 18.0kg 		
Operation Environment	<ul style="list-style-type: none"> -10 ~ 40°C for $n_{max} \leq 6000$: 0 ~ 40°C for $n_{max} \geq 6001$ Non-condensed. R.H. \leq 85%		

In the interest of improvement, specifications may change prior to notice

Options

- SUS304 Stainless Steel Platter Cover
- Serial Barcode Scanner



Fidelity Measurement Company Limited

www.fm.com.tw

info@fm.com.tw

REV.: G2e/26/05/02