



The **10i** is an OIML Class III 10,000e Approved Multi-Function Indicator Designed for Applications Prioritizing Speed, Seamless External Connectivity, Data Accessibility, and Uncompromised Security.

Ideal for Industries Requiring Precision Weighing, Data Logging, and Seamless Integration with External Systems like Weighing Software.



Functions and Applications

Static, Dynamic, Animal Weighing, Action-Tare-Memory (ATM), and Piece Counting Function

Food processing

Logistics and Warehousing

Manufacturing and Quality Control

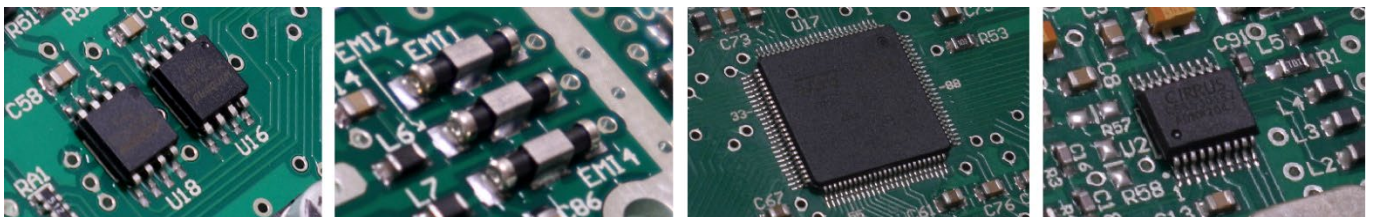
What's Inside

High-Speed 32-Bit Microprocessor

24-Bit A/D Converter

Intelligent and Robust EMC-Protected Design

Innovative Algorithms and Concepts with Customizable Operation Parameters



PLUs & Database

- Alibi Memory for up to 131,072 Individual Transactions
- 10 PLU each for Weight Check Limits, Quantity Check Limits, Preset Tare Values, and Average Piece Weights per every Weight Unit
- 1,000 PLU for Customer Code and Description
- 1,000 PLU for Product Code and Description
- 1,000 Production Settings PLU per Weight Unit
- Each Production Settings PLU Contains 15 Operation Parameters, including Label Files for Printing)
- Manual Addition of Short Notes (4 digits) for each Transaction.

Versatility, Functionality, and Accuracy are all Built-In

10i Multi-Function Indicator

Higher Efficiency & Less Human Error

- The Cortex M4 32-Bit 168 MHz Microprocessor Delivers High Speed Processing
- Operation Parameters Stored in PLUs and Databases can be Employed and Shifted by Keyboard, Barcode Reader, and Computer, and Completed in Milliseconds
- Check Limit Validation ensures Accurate Processing and Output of Results
- Large LCD Digits and Tri-Color Backlights Show all Operating Results and Statuses Provides Clear Visibility under Varying Light Conditions

Data & Data Security

- Real-Time, Non-Resettable Alibi Memory ensures Secure Data Storage
- Individual Transactions include 23 Results and Settings
- Local and Remote Data Retrieval Capabilities
- Comprehensive Management Reports for Yield Analysis Based on Employees, Products, or Locations

Connectivity, Communication & Output Formats

- Standard: 2 x RS232
- Optional: TTL, RS485, WIFI, Bluetooth, Optional Advanced Communication Board (LAN, USB-A, and USB-Mini Port included), 4-Channel Control Relay Board, 3 x External Input
- USB-A Support External Keyboard and Memory Disk
- Compatible with Computers, Ticket/Label, Barcode/RFID Reader, Remote Display, ERP, and Smart Devices
- Wi-Fi Working Mode Supports Both AP and Station Mode
- Wi-Fi Supports both TCP and UDP Protocols in Server and Client modes
- Output Formats
 - Predefined and Customizable Landscape, Portrait, and Continuous Output Formats
 - Checksum Support for Data Integrity Verification



Scan and Search

An Intelligent Search begins with a single scan of a Customer/Product Code. Depending on the settings, the scanned code is searched in either the Production Settings PLU or the Customer and Product Code & Description Databases.

If the scanned code exists:

- In the Production Settings PLU: The Corresponding Settings and Operational Parameters for that PLU will be Triggered automatically.
- In the Product Code & Description Database: The Corresponding Code & Description will be applied automatically.

Sys. Seq	Opr	Mode	Mac	MacGp	Date	Time	Ccode	C Description	Pcode	P Description	Gross	Tare	Net	Unit	@WT	@WT Unit	QTY	Low	High	Check Target	Result	Note	Checksum
23		0	11	22	12/12/2024	16:05:25	FM	Fidelity Measurement	10i	Super Indicator	10.844	-	10.844	kg				5.500	11.000	kg	Accept		80
24		0	11	22	12/12/2024	16:05:28	FM	Fidelity Measurement	10i	Super Indicator	16.267	-	16.267	kg				5.500	11.000	kg	Above		58
25	8888	1	11	22	12/12/2024	16:10:47	FM	Fidelity Measurement	10i	Super Indicator	5.421	-	5.421	kg	10.000	g	542	-	-	pcs			26
26	8888	1	11	22	12/12/2024	16:11:21	FM	Fidelity Measurement	10i	Super Indicator	5.421	-	5.421	kg	10.000	g	542	-	-	pcs			20
27	8888	1	11	22	12/12/2024	16:11:24	FM	Fidelity Measurement	10i	Super Indicator	10.842	-	10.842	kg	10.000	g	1084	-	-	pcs			5C
28	8888	1	11	22	12/12/2024	16:11:27	FM	Fidelity Measurement	10i	Super Indicator	16.264	-	16.264	kg	10.000	g	1626	-	-	pcs			6A

Alibi Management Report

Versatility, Functionality, and Accuracy are all Built-In

10i Multi-Function Indicator

Operation Features

- OIML Class III 10,000e Approved
- Extended Digital Indication Feature for 10x Higher Resolution Temporarily when Operated under OIML Mode
- Supports Single Range, Dual Range, and Dual Interval Operations
- Full Numeric and Function Keyboard
- Configurable Dynamic Weighing to avoid False Signal Output
- Multi Tare Modes (Manual, Preset, Repetitive, Continuous with Configurable Delay Time)
- Tare, Zero, and Print/M+ Key, Operator Number, Customer, and Product Code Input via Barcode/RFID Reader/Computer/Smart Device
- Real-Time Clock with Backup Battery
- Watchdog System to Prevent Damages Caused by Load Cell Short-Circuit
- Configurable Keypad, Check Result, and System Buzzer



Adjustable Tri-Color Check Result Backlight

Management Features

- Configurable Machine ID, Group, and Operator Numbers
- Alibi Management Report Retrieval by Day, Month, Period, or Specific Record
- PLU Database Content Exportable/Importable via USB memory Disk
- Support Inquiry, Setting, and Execution Commands
- Check Result Control for Accumulation, Data Printout, and Data Output
- Keypad Lock Function
- Label Printers Supported:
 - Datecs: LP-50
 - TSC: TDP/TTP-225, TDP/TTP-247, TDP/TTP-345, DH/TH220 Series, DH/TH240 Series, DH/TH340 Series
 - Sbarco: All Models with Serial Port
- Support Product Expiry Duration Input and Output

Options

- Stainless Steel Wall/Desk Mount Holder
- Built-in Wi-Fi, Bluetooth 2.0/4.0, RS485 Modules
- Built-In 4-Channel Control Relay Board
- Built-In External Input Set (3 Inputs)
- Built-In Advanced Communication Module (LAN, USB-A, and USB-Mini Port included)
- Bluetooth Barcode (CT10)/Serial Cable Barcode Reader



Versatility, Functionality, and Accuracy are all Built-In

10i Multi-Function Indicator

Specifications

OIML Approved Class/ Accuracy	Class III, 10,000e
Approved Minimum Input & Dead Load	<ul style="list-style-type: none">• 5% of Emax ≤ Dead Load = 0.5μV/e• 0% ≤ Dead Load < 5% of Emax = 1.5μV/e
Capacity and Readability	Free Setting
Weighing Range	Single Range, Dual Range, Dual Interval
Weight Units	kg, g, lb
Display	6 Large Numeric LCD Digits (37.5 mm) with Wide Angle Visibility
Load Cell Connection	<ul style="list-style-type: none">• Excitation Voltage = 5V DC• Support both 4-wire & 6-wire Load Cells• Maximum Connections: 4 x 350Ω (approved), 12 x 350Ω (non-approved).
Micro Processor	32-bit High Speed & High EMC Immunity
A/D Converter & & Internal Resolution	<ul style="list-style-type: none">• 24 bit Low-Noise Delta to Sigma (Δ-Σ)• 4.0 million Counts at 20mV• Minimum input per d = 0.05μV
AD Conversion Speed	15, 30, 60, 120 times/second Selectable
Max. Tare Range	-Max or -Max ₁ (Subtractive Tare)
Calibration Methods	<ul style="list-style-type: none">• 2 Span Points Calibration (Linearity Calibration), or• 1 Span Point Calibration, or• Numeric Calibration Through Keyboard
Power Source	<ul style="list-style-type: none">• Built-in Rechargeable 6V, 4AH Battery• External 12VDC, 1A Power Adaptor
Accessories	<ul style="list-style-type: none">• Dust Cover• Pillar Mount Holder (φ35 ~ 38mm)• Built-in Rechargeable Battery• Universal Power Adaptor
Packing	<ul style="list-style-type: none">• Individually Packed. 36 x 33 x 16cm. Net/Gross = 2.50/2.90kg• Four Units in a Shipping Carton. 68 x 38 x 36cm. Net/Gross = 10.00/13.50kg
Operation Environment	<ul style="list-style-type: none">• Temperature: -10°C to 40°C• Humidity: ≤85%, Non-condensing

In the interest of improvement, specifications may change without notice



Fidelity Measurement Company Limited

www.fm.com.tw

info@fm.com.tw

REV.: 10i/26/05/07